

YOUR PERSONALIZED JAGUAR

F-PACE PREMIUM

3.0 Liter V6 340 HP Supercharged Engine AWD



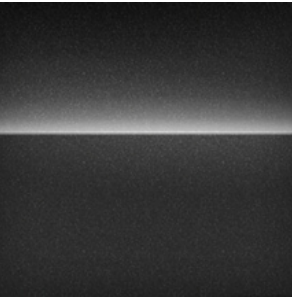
THE ART OF PERFORMANCE



EXTERIOR



	DESCRIPTION	PRICE
EXTERIOR		
Exterior Color	Ebony Black	\$0
Wheels	19" Fan 5 spoke with Gloss Black finish	\$1,000
Privacy Glass	Privacy glass	\$0
Window Surrounds	Gloss Black side window surround	\$0
Headlamps	Halogen headlamps with Daytime Running Lights	\$0
Roof	Sliding Panoramic roof	\$0
		TOTAL \$1,000



Exterior Color



Wheels



Privacy Glass



Window Surrounds



Headlamps



Roof

INTERIOR



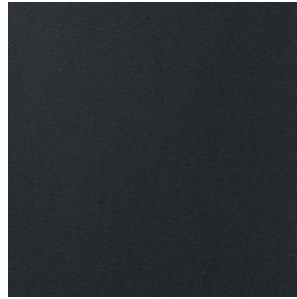
	DESCRIPTION	PRICE
INTERIOR		
Interior Trim	Jet Luxtec	\$0
Veneer	Gloss Black trim finisher	\$0
Headlining	Jet Morzine headlining	\$275
Steering Wheel	Multi-Function Softgrain Leather steering wheel	\$0
Front Seating	10-Way Electric front seats with Memory	\$0
Infotainment	InControl Touch - Meridian™ Sound System (380W)	\$0
		TOTAL \$275



Interior Trim



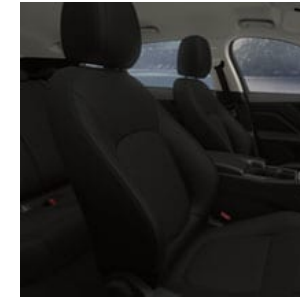
Veneer



Headlining



Steering Wheel



Front Seating



Infotainment

OPTIONAL FEATURES

OPTIONAL FEATURES

	DESCRIPTION	PRICE
Packs		\$1,041
Navigation Package	Navigation system with SD Card-based mapping InControl Apps™ Multi-Function Softgrain Leather steering wheel	\$500
Wheel Lock Package	Chrome Wheel Locks Jaguar Logo Licence Plate Frame	\$191
Black Package	Gloss Black radiator grille with Gloss Black surround Gloss Black side window surround Gloss Black side power vents	\$350
Exterior Features		\$375
Heated front windshield and heated washer jets	Offers a quick and convenient way to defrost or demist the windshield. Heated washer jets prevent washer fluid from freezing so you can keep your windshield clean in cold conditions.	\$375
		TOTAL \$1,416

STANDARD FEATURES

Dynamic Features

All Wheel Drive (AWD)	Cruise Control with Automatic Speed Limiter	All Surface Progress Control (ASPC)
8-speed Electronic Automatic Transmission with Jaguar Sequential Shift	Dual tailpipes with 84mm finishers	Hill Launch Assist
Jaguar Drive Control	Electrically Power-Assisted Steering	Torque Vectoring by Braking (TVBB).
Electric Parking Brake (EPB)	Brake pad wear indicator	Performance Brakes
Trailer Stability Assist		

Exterior Features

Grained Black door claddings	Chrome side power vents	Heated Rear Windshield
Variable Intermittent Wipers and Rain sensing Windshield Wipers	Electric front and rear windows with one-touch open/close and anti-trap	Approach Illumination (automatic via remote) & follow me home lighting
LED rear lamps	Automatic headlamps	35t AWD badge
Infrared Reflective Windshield	Auto-Dimming, Power Fold, Heated door mirrors with Memory and Approach Lights	Powered tailgate / trunk lid

Interior Features

Auto-Dimming interior rear view mirror	Metal treadplates with Jaguar script	Carpet mats
Color-coded touchscreen surround	Twin front cupholders	Additional power sockets

Interior Features

Lockable glovebox	Center console storage surround finishers in Color Code	Manually adjustable steering column
Interior lighting	Split fold rear seats - 40/20/40	Reversible loadspace floor switchable from luxury carpet to a rubber surface
Sunglasses holder in overhead console	Overhead light console with JaguarSense™ control	Rear passenger air vents
Front armrest with storage compartment	Loadspace with premium luggage tie downs	Center console with side stowage
Shopping bag hooks in trunk	Black gearshift paddles	Dual-Zone Climate Control

Infotainment

InControl Protect™	InControl Remote™	Eco Mode
Bluetooth® telephone connectivity and Audio Streaming	Dynamic Volume Control	Analog dials with 5" full color central TFT display
HD Radio	iPod® Integration	

Safety & Security

Tire Pressure Monitoring System (TPMS)	Alloy Space saver spare wheel	Rear View Camera
Garage door opener (HomeLink®)	Valet Mode	Emergency Brake Assist
Dynamic Stability Control and Traction Control	Perimeter sensing alarm and immobilizer	Jaguar Smart key system™ - Keyless Start
Power operated child locks	Airbags - Driver and front passenger, with seat occupant detector for passenger	Airbags - front side

Safety & Security

Airbag - full length side window curtain

ISOFIX rear

Passive Front Head Restraints (Whiplash Protection)

Warranty

Jaguar EliteCare

- 5-year/60,000 mile New Vehicle Limited Warranty
 - Complimentary Scheduled Maintenance
 - 24-Hour Roadside Assistance
 - Jaguar InControl® Remote & Protect
-

TECHNICAL SPECIFICATIONS

Performance (Manufacturer's Estimates)

Acceleration 0-60 mph seconds	5.4
Top speed mph	155

Fuel Consumption

City (mpg)	18
Highway (mpg)	23
Combined (mpg)	20
Tank capacity (US gallons)	16.6

Engines

Cylinders/valves per cylinder	6/24
Bore (in. / mm)	3.33/84.5
Stroke (in. / mm)	3.50/89.0
Capacity (cc)	2,995
Maximum Power (hp)	340
@ rev/min	6,500
Maximum torque (lb-ft)	332
@ rev/min.	4,500
Compression ratio	10.5

Engines

Transmission	Automatic
--------------	-----------

Weight

Weight from (lb)	4,012
Gross Vehicle Weight (lb)	5,511

Dimensions

Front track (in)	64.6
Rear track (in)	65.1
Overall height (in)	65
Wheelbase (in)	113.1
Overall length (in)	186.2
Overall width inc. mirrors (in)	85.6
Overall width with mirrors folded in (in)	81.4
Turning circle diameter (in)	467.3
Ground clearance (in)	8.3
Trunk Volume (cu. Ft.)	33.5

PRICING

Base MSRP	\$46,600
Configured options	\$2,691
Delivery and Destination charge	\$995
TOTAL MSRP	\$50,286¹

YOUR CONFIGURATION

https://rules.config.jaguar.com/jdx/en_us/f-pace_k17/4omse/a-30p-340aawd_a-crossover_jt1/c55r_d53f_d96a_h01ejet_j13a_pec_z60q/jdxpayoff.html

09/21/2019 12:56



TERMS AND CONDITIONS

*Price shown is Base Manufacturer's Suggested Retail Price. Excludes destination/handling charge (\$995 for XE, XF, and E-PACE, \$1025 for XJ, F-TYPE, F-PACE, and I-PACE), tax, title, license, and retailer fees, all due at signing, and optional equipment. Total Manufacturer's Suggested Retail Price includes destination/handling charge noted above and may include optional equipment but excludes tax, title, license and retailer fees, all due at signing. Retailer price, terms and vehicle availability may vary. See your local authorized Jaguar Retailer for details.

